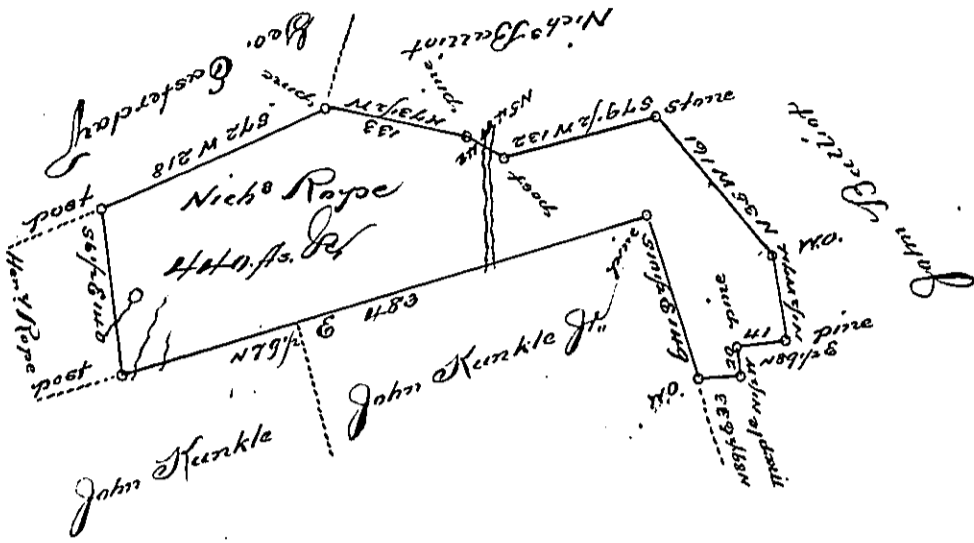


Sug. Loaf & 236
 Hazle -
 Luzerne



A Draft of a tract of Land Called *see* Situate on the waters of Black Creek
 in the County of Northum^r. Containing Four Hundred & forty Acres and *more*
 Surveyed for Nich^s Rope the 5th day of October 1793 by virtue of a warrant
 dated the 13th day of June 1793.

by Wm. Gray D. J.

To Daniel Brodhead Esq^r
 Survey Gen^l



IN TESTIMONY that the above is a copy of the original remaining on file in the
 Department of Internal Affairs of Pennsylvania, made con-
 formably to an Act of Assembly approved the 16th day of
 February, 1833, I have hereunto set my Hand and caused
 the Seal of said Department to be affixed at Harrisburg, this

sixth day of August, 1895,

James Whatta
 Secretary of Internal Affairs.